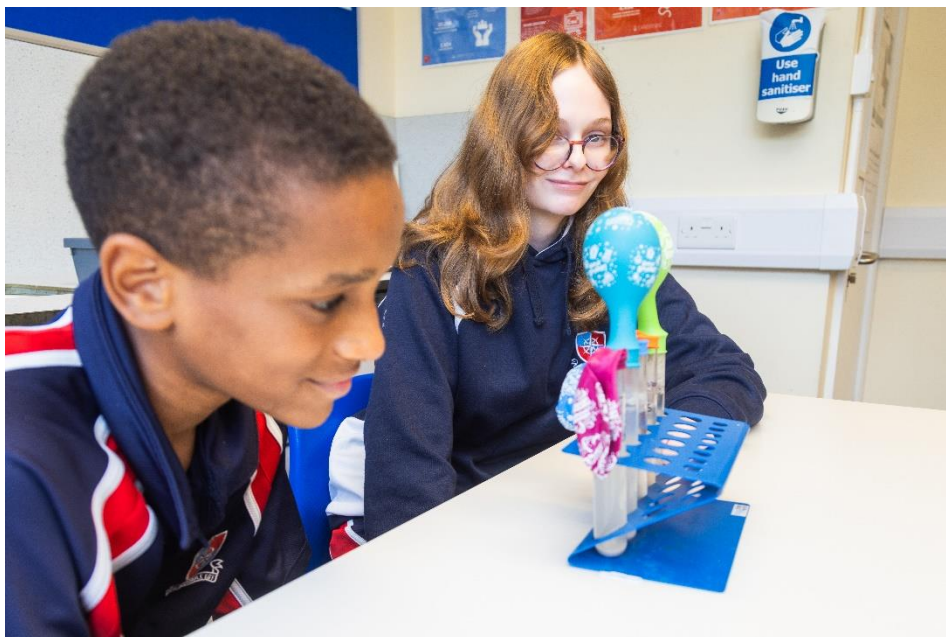




Fairley House School

Paediatric Speech and Language Therapist and Specialist Teacher [Eqv to NHS Band 6 HCPC registration]

Vacancy Information



London's leading day school for children with specific learning differences

and all of a sudden nothing is impossible....

Background of Fairley House

The school is located in central London on two sites. The senior department (Years 7 to 11) is based in Westminster and the junior department (Years 3 to 6) is based in Lambeth. It is approximately 10-15 minutes' walk between the two sites.

The school was established in 1982 by Daphne Hamilton-Fairley whose husband was killed by an IRA bomb in 1975. Mrs Hamilton-Fairley was a speech and language therapist who had been providing therapy for dyslexic children at home. As a parent with four children of whom two were dyslexic, she knew how poor provision was for dyslexia in London and in the UK generally. She resolved to set up a school for dyslexic children as a memorial to her husband, hence the name Fairley House. She aimed to combine a medical focus: speech and language therapy and occupational therapy, then mainly delivered in hospital clinics, with education. In this respect she was a pioneer and although provision of therapy within school is now commonplace, we stay true to her vision by pushing forward the boundaries of integrating therapy and education.

Currently the school is thriving with around 210 pupils. In response to demand and to enable our 10-year Strategy Plan we aim to provide help for more children and families affected by specific learning differences, through offering Assessment, Training and Research into effective teaching methods. The school is a charity and is run by a Board of Governors.

Distinctive features of the school and its governing structure.

We are registered with the DCSF as an independent special school for specific learning difficulties. We have children from a range of socio-economic backgrounds and from a wide geographical area (central and greater London but children have come from as far away as Cambridge or the Isle of Wight, remarkable for a school that offers no boarding!) The majority of pupils are private placements and parents manage to afford the fees which are high due to the favourable staff: pupil ratio and expertise available. 58% of children have an Education, Health and Care Plan, the vast majority paid for by local authorities (LAs) with some coming from the poorest London boroughs. It is a tribute to our children that this diversity is embraced, and friendships are forged by children from very different backgrounds and circumstances. Children do not arrive in Year 1 and stay until Year 9 because the aim is to provide intensive help for their difficulties and return them to mainstream schooling as and when is appropriate.

For Autumn 2025

Fairley House School is looking to appoint a Speech and Language Therapist [band 6] and Specialist Teacher

Salary band £41K - £53K + benefits package and the opportunity to join our Level 5 SpLD training course.

We are looking for an inspiring, inspirational and highly motivated speech and language therapist to work in a setting which really does change pupils' lives. This is an exciting opportunity to join a supportive and collaborative team in an outstanding independent school catering for students with Specific Learning Differences (for example dyslexia, dyscalculia and dyspraxia).

Our aim is to transform the lives of children with Specific Learning Differences by providing a rich and stimulating learning environment, which will engage children, boost their ambitions and help them realise their full potential.

The successful candidate will have the opportunity to work alongside Teachers and Occupational Therapists, who will offer support and guidance both in and outside of the classroom. Small class sizes enable teachers to get to know their pupils and provide excellent pastoral care allowing for the development of the whole school.





Dear Candidate

We are so pleased that you are interested in applying for the post of Speech and Language Therapist at Fairley House School. We hope that our application pack gives you all the information you need but if you do have any further questions, please do not hesitate to contact us.

Please see the job description and person specification attached to the pack and please address all key areas when submitting your application form and personal statement. This is an opportunity to be involved in a school that really does change pupils' lives.

We are a supportive organisation and pride ourselves on our commitment to staff wellbeing, professional development, induction and our whole school ethos.

Our incentive package includes:

- Fairley House operates its own competitive pay scale, and salaries are enhanced to reflect our status as a leading Central London SEN Independent School.
- Generous non contribution Pension
- Numerous CPD opportunities to enhance the knowledge of working within an SpLd school.
- Access to a wide range of online courses
- Small class sizes
- Free school lunch during term time
- Buffet lunches during INSET
- End of Term staff events
- Complimentary tea/coffee and fruit
- Cycle to work scheme.
- Employee assistance line which includes online counselling
- Excellent transport links (close to mainline Waterloo and Vauxhall, Victoria and several central London bus routes)
- The opportunity to work in the centre of London, but close to leafy squares and parks with attractions such as Tate Britain, Lambeth Palace and the London Eye on our doorstep.

We are keen to attract a diverse range of professionals who will support the ethos of the school, if you would like a confidential chat about the roles and ambitions of the school then please do feel free to contact Sally Fenton, HR Manager careers@fairleyhouse.org.uk.

Fairley House is committed to the safeguarding and welfare of children and successful applicants must be willing to undergo an enhanced DBS check, personal and professional reference check and a medical.

I look forward to receiving your application.

Yours sincerely,
Michael Taylor
Head



Job Description attached.

Why work at Fairley House School.

Comments from current staff

“What I love most about working at FHS is the team approach to helping our pupils. I believe that this holistic approach of looking at the whole child is what makes us so successful at achieving our ultimate aim, which is to get them back into mainstream schooling, equipped with all the strategies they need to flourish. I find it very insightful to work with a child across different contexts (such as within a speech and language therapy session, a Writing lesson, a Reading lesson or within lunchtime clubs) and this is what enables me, as a speech and language therapist, to be able to ensure that the skills that I am working on are functional to the child within all of their lessons, throughout the school day. I love working collaboratively with the very talented and creative teachers here to plan and co-teach lessons together, where we are both working towards the same common goals.

The children here are also inspirational. Often, they have had very difficult experiences of education prior to coming here, where learning has been such a challenge, and they sometimes have a very low opinion of themselves. However, they are very brave and resilient and willing to give learning another go, and it is amazing to see them succeed and recognise their achievements for themselves. We quickly see their self-esteem soar as they realise what they are capable of, and this gives them the confidence to take more risks with their learning”.

Alex

“I was on my way home from a parents evening and was yet again reminded how fortunate I am to be working at Fairley House. After a particularly emotional meeting, I left close to tears when a mother described how much her daughter had flourished since being at the school. On a daily basis I know that I am contributing to unlocking the potential of children who previously have seen themselves as a failure. I work alongside a fantastic team and together I know we make such a difference to our students and their families, giving them a safe haven in which they can achieve their potential”.

Miriam

Ready to apply?

Please contact Sally Fenton, HR Manager, at careers@fairleyhouse.org.uk about this vacancy if you require further information, would like to book a tour or for an application form.

Please see our website for more details about the school and our prospectus.

www.fairleyhouse.org.uk closing date 2/6/2025

Interviews are due to take place early in June

Interview Process

Those candidates that are shortlisted will be invited to a panel interview at the school. Subject to the number of applications, shortlisting might take place before the deadline for applications has passed.